

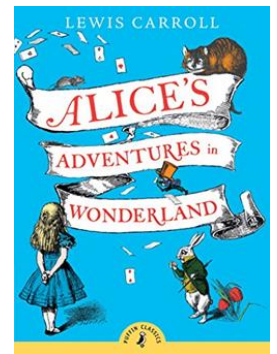
## Year 6 Newsletter – Spring Term 1

Happy New Year, we hope you all had a great break.



This term will be one of the most important for year 6 and pupils will need to be really focussed and determined to do their best. We will be putting a much greater emphasis on SATs preparation in order to help your child achieve their maximum potential. Our key focus will be on reading comprehension, SPAG (Spelling, Punctuation and Grammar), and maths. We would also encourage you to support your child at home by using MY Maths, Times Table Rockstars and Spelling Shed. More information regarding SATs will be made available soon.

This year our class novel is Alice's Adventures in Wonderland and we will be having a lot of fun with this topic! We will be creating our own wonderland characters and using our creative skills in order to design our own wonderland characters. Our shared reading learning will continue to use The VIPERS reading dogs. We will also be completing daily reading comprehension activities in order to help the children to sharpen up their comprehension skills in preparation for the reading test.



Spellings will be set through the Spelling Shed online resource each half term and your log in details have stayed the same as last year. We have uploaded the High Frequency words that are still being regularly misspelled as well as the topic words for this half term that are also attached to this document. As well as this we will be uploading spellings lists for our No Nonsense Spelling patterns that we teach each week. Please encourage your child to access Spelling Shed and participate and engage with home learning, it does make such a difference in the long term to their education.

In Maths, we will investigate decimals and percentages. There will also be a continued focus on arithmetic and the children will be completing their regular Number Sense questions daily. All of our maths focuses assume pupils have a good general knowledge of place value and times tables. This is another area where you could support your child in their learning.



During this half term, we will consider the idea of setting goals and aspirations within our JIGSAW sessions through the theme of Goals and Dreams. We will focus on celebrating difference. The children will be thinking about setting their own goals for both the short and long term and dealing with both success and failure.



In science, we will look at the work of Charles Darwin to help us understand how the living world has changed, or adapted, over time. We will research his theory of evolution and investigate inherited traits.

This half term we will work on dance skills in P.E. P.E will be on a Friday and it is extremely important that your child has suitable clothing and footwear for this every week. Children also need to remember to bring a water bottle, not just for the dance sessions but to also stay hydrated during the day.

In Harmony sessions will be continuing on a Monday and children are very welcome to attend Area Band (those that come are automatically entered into Mr Norris' musician of the month award).

On a Thursday afternoon, Mrs Sian and Mrs Lawrence will be taking the children to teach Spanish and other areas of the curriculum.

### What can you do to support your child's learning?

1) Listen to them read. Encourage them to use the VIPERS reading dogs when discussing the books they have read.

#### Reading Dogs

##### Predictor Pru

Predict what you think will happen based on the information that you have been given.

- Look at the book cover/blurb – what do you think this book will be about?
- What do you think will happen next? What makes you think this?
- How does the choice of character or setting affect what will happen next?
- What is happening? What do you think happened before? What do you think will happen after?
- What do you think the last paragraph suggests will happen next?
- From the cover what do you think this text is going to be about?
- What is happening now? What happened before this? What will happen after?
- What does this paragraph suggest will happen next? What makes you think this?
- Do you think the choice of setting will influence how the plot develops?
- Do you think... will happen? Yes, no or maybe? Explain your answer using evidence from the text.



2) Encourage them to use My Maths, Times Table Rockstars and Spelling Shed

Thank you very much  
Ms Barton & Miss Birch

Thank  
You

Year 6 spellings-	Adaptation
Society	Evolution
Community	Inheritance
Tolerance	Species
Sensitivity	Survival
Respect	Mutation
Acceptance	Variation
Spiritual	Extinct
Religion	Genes
Biography	Palaeontologist
Character	